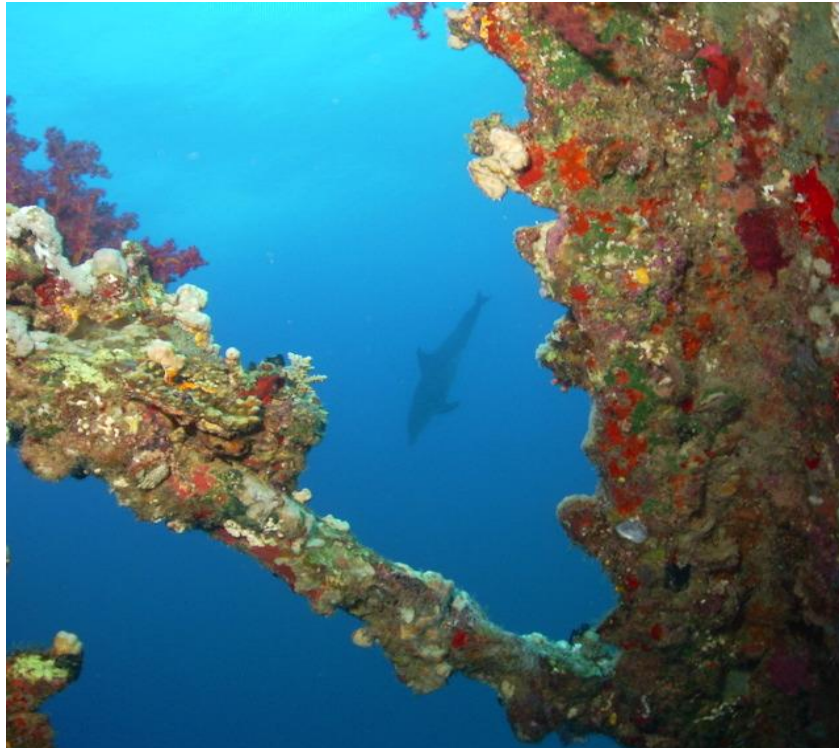




THE TREASURES OF ANCIENT EGYPT AND THE RED SEA



**16 DAYS/14 NIGHTS
INCLUDING A 5 DAY/4 NIGHT NILE
CRUISE AND A 7-DAY CLASSIC CRUISE
LIVE ABOARD**

2470 North Jerusalem Road Suite # 15, North Bellmore, NY 11710,

Tel 516-781-5556, Fax 516-781-5557

Toll Free 1-866-853-2711, info@learningthroughtravel.com

WWW.LEARNINGTHROUGHTRAVEL.COM



Day 1 – Saturday – Departure

Depart New York's John F. Kennedy International Airport this evening for Egypt. Dinner and a light breakfast will be served on board.

Day 2 – Sunday – Cairo

Ahlan Wa Sahlan! Welcome to Egypt, Land of the Pharaohs! Upon arrival at Cairo International Airport, your tour representative will greet you, and assist with custom and visa formalities. After check-in at the hotel and time to freshen up, you will meet with the Learning Through Travel representative to discuss the exciting days ahead. A welcome dinner this evening will introduce you to Egyptian cuisine.

ACCOMMODATIONS: 5 - STAR DELUXE HOTEL (D)

Day 3 — Monday – Cairo



Today visit the Giza Plateau where you see the three Pyramids, the greatest being that of Cheops. It took 100,000 workers more than 20 years to construct. Entrance to one of the pyramids is included. Southeast of the Great Pyramids is the Sphinx, carved out of solid natural rock in about 2650 BC, a magnificent monument with the head of the Pharaoh and the body of a lion. This afternoon visit the Egyptian Museum of Antiquities where you will see many of Egypt's ancient wonders including the treasures of King

Tutankhamen. The day ends at the Khan el Khalili Bazaar where you can shop for jewelry, handicrafts and cottons.

ACCOMMODATIONS: 5 - STAR DELUXE HOTEL (B, L)

Day 4 – Tuesday – Cairo/Aswan-Optional Abu Simbel/Nile Cruise



This morning a short flight will bring you to Aswan to board your Nile Cruise or you may select the optional pre cruise three-hour Abu Simbel excursion to visit the great Temples of Ramses II and his wife Nefertari. The colossal statues were originally carved into the side of a natural cliff that had to be rescued from the rising waters of Lake Nasser. After your excursion and upon your return to Aswan you will embark your Nile cruise. After check in and lunch, visit Aswan's High Dam, Granite Quarries, and Unfinished Obelisk. Then continue by felucca to enjoy Kitcheners Island with its beautiful gardens and to

view the mausoleum of the Agha Khan.

ACCOMMODATIONS: 5-STAR DELUXE NILE CRUISE SHIP (B, L, D)

2470 North Jerusalem Road Suite # 15, North Bellmore, NY 11710,

Tel 516-781-5556, Fax 516-781-5557

Toll Free 1-866-853-2711, info@learningthroughtravel.com

WWW.LEARNINGTHROUGHTRAVEL.COM



Day 5 - Wednesday – Nile Cruise Aswan/Kom Ombo/Edfu

After breakfast sail in a small boat to the Philae Temple, situated on the island of Agilika. Like Abu Simbel, the temple was relocated in order to protect it from the rising water of the High Dam, built in 1960. The main sanctuary on the island is dedicated to the Goddess Isis and her son Horus. Ancient Egyptians believed that Isis was the Goddess of Magic, and when she wept, the Nile flooded. This afternoon set sail for the city of Kom Ombo, known as “Ombos” in ancient times. Its location on the Nile, gave it strategic importance to control the routes from Nubia to the Nile Valley. The city became prosperous when the temple in the Ptolemaic era was built, divided into two symmetrical halves. The left side is dedicated to the falcon-headed god, “Heroeris,” and the right side to the crocodile god, “Sobek”. Reliefs of Ptolemaic Pharaohs are found in the porch area. The remainder of the temple consists of a crypt, chapels, Roman wells where sacred crocodiles may have been kept, and the remains of a birth house. On the walls of the temple, you will see the first recorded representation of medical instruments. Sail onto Edfu, midway between Aswan and Luxor.

ACCOMMODATIONS: 5-STAR DELUXE NILE CRUISE SHIP (B, L, D)

Day 6 - Thursday – Nile Cruise Edfu/Luxor



Begin the day by visiting the magnificently preserved temple of Edfu. The sandstone temple of Horus the Sun God was built under the Ptolemies and completed by the mid first century, BC. In the colonnaded court, we will see the surviving statue of a pair of falcons representing Horus. A series of smaller chambers leads to the Sanctuary of the God, which is lit by three openings in the ceiling. Ceremonies, celebrations, and war scenes are shown on the walls of the temple. Later today, sail to Esna, pass the lock, and arrive in Luxor, ancient Thebes. This afternoon explore the East Bank of the Nile including the Temple of Luxor. Here, the Avenue of Sphinxes, famous for its artistic degree of uniformity, leads to the entrance of the temple where a seated colossus of Ramses II and a towering Obelisk sit. Continue to the Karnak Temple, one of the most impressive monuments of ancient art and architecture in the world. The carvings, which adorn all of the walls, depict the history and conquests of many of Egypt’s Pharaohs. This evening you may join an optional excursion to the Karnak Temple for a spectacular Sound and Light Show.

ACCOMMODATIONS: 5-STAR DELUXE NILE CRUISE SHIP (B, L, D)

2470 North Jerusalem Road Suite # 15, North Bellmore, NY 11710,

Tel 516-781-5556, Fax 516-781-5557

Toll Free 1-866-853-2711, info@learningthroughtravel.com

WWW.LEARNINGTHROUGHTRAVEL.COM



Day 7 - Friday – Luxor

Cross the West Bank to explore the Valley of the Kings. The Valley of the Kings houses 63 tombs belonging to the Pharaohs of the New Kingdom, including the famous tomb of King Tutankhamen. Many of the tombs, carved out of the bedrock, retain their original bright colors and fine relief's and scenes, thought to guarantee the safe passage of the Ka to the after life. Afterwards continue on to Deir El Bahri to visit the mortuary Temple of Queen Hatshepsut, considered one of the finest buildings in Egypt.

ACCOMMODATIONS: 5-STAR DELUXE NILE CRUISE SHIP (B, L, D)

Day 8 – 14 - Saturday – Friday - Luxor/Hurghada



Disembark the cruise this morning and drive to Hurghada where you will embark your one week live aboard dive boat following the Classic Cruise. Starting from Hurghada and sailing north offers a perfect combination of reef and wreck diving. The famous horseshoe shaped reef of Shaab El Erg is a perfect example of the reefs on offer on this cruise with its beautiful hard coral garden and the chance to see dolphins. Abu Nuhas has four well-known wrecks: Giannis D, Carnatic, The Lentil Wreck and The Tile Wreck, all offering spectacular dives and plenty of fish life. Night dives can be superb in this area as Gubal Island offers protected anchoring for the night. A small wreck at 26-30 feet makes for a spectacular night dive with lionfish, scorpion fish and its resident giant moray eel. A short ride across the straits of Gubal and you visit the most famous wreck of the Red Sea, the Thistlegorm, an awe-inspiring World War II British vessel with a cargo full of armaments (Bedford trucks and BSA motorbikes), destined for the British troops in North Africa. She was sunk by the German Luftwaffe and now lies in 90 feet of water. Depending on divers' experience, weather and current conditions, we also try to offer a night dive here. Close by is the Ras Mohamed National Park, offering a morning dive at the 'Shark Reef', a sheer wall falling into the blue. The Ras Mohamed Park is usually the 'border', from here the boat heads back towards Hurghada.

ACCOMMODATIONS: LUXURY LIVE ABOARD DIVE BOAT (B, L, D)

Classic Cruise Highlights: Northern Red Sea from Hurghada to the Sinai Peninsula including Abu Nuhas Giftun Island - Straits of Gubal - SS Thistlegorm - Ras Mohamed.

Wreck of the Thistlegorm

To most, this wreck needs no introduction. In October 1941 it was at anchor behind Shab Ali and awaiting orders to move up through the Suez Canal to deliver a cargo of munitions to British troops in North Africa when German aircraft bombed the 426 foot freighter. The cargo is still virtually intact and includes railway locomotives, bren gun carriers, trucks, motorcycles and a host of ammunition of all sizes. Dive the deeper

2470 North Jerusalem Road Suite # 15, North Bellmore, NY 11710,

Tel 516-781-5556, Fax 516-781-5557

Toll Free 1-866-853-2711, info@learningthroughtravel.com

WWW.LEARNINGTHROUGHTRAVEL.COM



stern section first and the bow for the second dive of the day. The wreck is home to Bat Fish, Jacks, Barracudas, Surgeon Fish, Nudibranchs and Rabbit Fish graze the hull. The current here can be strong and the visibility reduced so ensure a full briefing from your dive guide and enjoy your visit to this part of history.

Abu Nuhas

Also known as the 'Ships Graveyard', this reef is dangerously positioned close to the busy shipping lanes of the Gulf of Suez. This reef has claimed more ships than any other in the area. On the northern side are four wrecks laying on a sandy seafloor at the bottom of a steep sloping reef layered with table corals. The wrecks are sometimes inaccessible in anything other than a RIB or inflatable due to the heavy swell driving down the length of the gulf. On the south side is a safe anchorage for live aboard and two beautiful reefs, known as Yellow fish reef that make an excellent third dive, night dive or an alternative if the weather is extremely bad.

Giannis D

This Greek freighter hit the reef in April 1983 and over the course of two weeks slowly broke in two and sank. It is the most dived wreck here, laying in 91 feet and leaning to port with a fully intact stern section and an impressive engine room packed with glass fish. Locally known as the 'wood' wreck for the cargo it was carrying when it sank. The bow is also very interesting but is a long swim out. It is a great wreck for penetration but beware of disorientation due to the angle at which she lays. Be weary of the many lion fish and scorpion fish that call this wreck home and watch out for the strong surges in and around the wreck in rough weather.

Carnatic

A British P & O steamer which struck the reef in 1869 and sank the next day as the weather got worse. It was a passenger and mail ship and is sometimes known as the 'wine' wreck for the numerous bottles once found in the holds; sadly not many now remain to be seen. Rumor has it that she sank with forty thousand pounds sterling of gold bullion, much of which was never recovered.

She lies in 96 feet and now the hull is draped in multicolored soft corals and the inner areas are full of glass fish complete with red mouthed grouper. One davit supports a beautiful table coral. The wreck is home to Grouper, Octopus, Morays, Jacks and Tuna cruise overhead.

The Wreck of the Dunraven

At the southern extreme of 'Shab Mahmoud' there is a series of shallow reefs and lagoons among which lies the wreck of the 238 foot English steamer sunk in 1876 on its way from Bombay to England loaded

2470 North Jerusalem Road Suite # 15, North Bellmore, NY 11710,

Tel 516-781-5556, Fax 516-781-5557

Toll Free 1-866-853-2711, info@learningthroughtravel.com

WWW.LEARNINGTHROUGHTRAVEL.COM



with timber and spice. The hull lies upside down and is totally covered in corals (max. depth 96 feet), the prop and rudder lies at 63 feet. The wreck is home to a wide variety of marine life, morays, napoleon, groupers and schools of glass fish and goat fish inside the wreck.

Ras Mohammed

It has earned itself a reputation as one of the top diving areas in the world, here at the tip of the Sinai where the vast bodies of water, the Gulf of Suez and the Gulf of Aqaba meet has created an ecosystem like no other and wall diving is at its very best.

Shark Observatory

The site is actually not noted for its shark sightings; however, it offers a fantastic dive. Beneath the towering cliffs that continue below the surface to disappear into the deep abyss the wall is covered with soft coral and honeycombed with numerous gullies and canyons that are home to hordes of Glass Fish and Hatchet Fish herded by Red Mouth Grouper. An overhang, fringed with sea fans at 33 feet, is a great place to watch the Trevallies, Jacks and Turtles passing in the blue. At the southern end Anemone city is worth a visit.

Shark & Yolanda Reefs

Situated right at the tip of the Sinai this site is world renowned, the two small ergs are joined by a vertical wall dropping into the abyss. Start your dive at Shark reef and use the prevailing current to explore the wall abounding in multihued soft corals. At 100 feet large schools of barracuda and snappers gather in often strong currents just off the wall. Swim through the schools to the outside as silky sharks usually gather there, but be careful not to lose your orientation to the wall. As you proceed toward Yolanda you will reach a plateau at 50-80 feet scattered with small ergs and coral outcrops where stone fish and scorpion fish wait for a meal. Continuing round the reef you will come upon the scattered remains of the wreck of the 'Yolanda' complete with its cargo of toilets and baths. The whole of this area is big fish territory so keep an eye on the blue for the action with tuna, bluefish, and the occasional hammerhead. Ensure your dive guide gives you a thorough briefing as the currents here can be strong and complicated.

Day 15 - Saturday – Hurghada/Cairo

Today depart the live aboard for Cairo where the remainder of the day is at your leisure. This evening enjoy a farewell dinner.

ACCOMMODATIONS: 5 - STAR DELUXE HOTEL (B, D)

2470 North Jerusalem Road Suite # 15, North Bellmore, NY 11710,

Tel 516-781-5556, Fax 516-781-5557

Toll Free 1-866-853-2711, info@learningthroughtravel.com

WWW.LEARNINGTHROUGHTRAVEL.COM



Day 16 - Sunday – Departure

Farewell to Egypt as you transfer to the airport for your return flight to New York. **(B)**

TOUR HIGHLIGHTS

- International air New York/Cairo/New York
- Domestic Air Cairo/Aswan-Hurghada/Cairo
- 4 nights accommodation at a 5-star deluxe hotel
- 5 days/4 nights 5-star deluxe Nile Cruise
- 7 nights Live Aboard–Classic Cruise program
- All transfers: Cairo/Aswan/Luxor/Hurghada
- Transfer of dive equipment Cairo/Hurghada/Cairo
- Sightseeing and transfers by deluxe motor coach
- English speaking guide throughout Egypt
- Full day sightseeing Pyramids (entrance into 1 pyramid)/Sphinx –Egyptian Museum of Antiquities including entrance into the Mummy Room-Citadel, Mosque & Bazaar
- All entrance fees and shore excursions on Nile Cruise
- 14 breakfasts, 12 lunches and 13 dinners
- Hotel taxes and service charges
- Porterage
- Luggage Tags, Travel Bag, Passport Wallet, First Aid Kit

NOT INCLUDED

- U.S. Departure Taxes & Airport Security (\$285.00 subject to change)
- Domestic air within the U.S.
- Items of a personal nature such as laundry, telephone calls, inter-net services, dive equipment, National Park fees, soft drinks, coffee, tea (except at breakfast), mineral water, alcoholic beverages, passport fees, gratuities for drivers, guides, transfer personnel, travel insurance, etc.....

2470 North Jerusalem Road Suite # 15, North Bellmore, NY 11710,

Tel 516-781-5556, Fax 516-781-5557

Toll Free 1-866-853-2711, info@learningthroughtravel.com

WWW.LEARNINGTHROUGHTRAVEL.COM